



# CanoeKayak Canada - Whitewater Emergency Action Plan

LOCATION :	Lower Castle	DATE :	
TIME IN :		TIME OUT :	
TRIP LEADER :		ASSIST. LEADER :	
FIRST AID LEADER :	1.	2.	
COMMUNIC. LEADER :	1.	2.	

## Map of River and Surrounding Area[Novice/Intermediate, 2.5-4 hours with one II+ ledge]

### RIVER ACCESS POINTS :

- ◆ PUT-IN & TAKE-OUT ]
- ] [ BRIDGE
- ] D DAM
- PAVED ROAD (INCLUDE NUMBER)
- DIRT ROAD
- ..... TRAIL
- ++++ RAILWAY TRACKS

### SPECIAL HAZARDS

- ▬ DIFFICULT RESCUE AREA(S)
- [W WATERFALL (INCLUDE HEIGHT) ...
- P PORTAGE (INCLUDE DISTANCE)
- OTHERS (I.E. GLASS ON TRAIL)

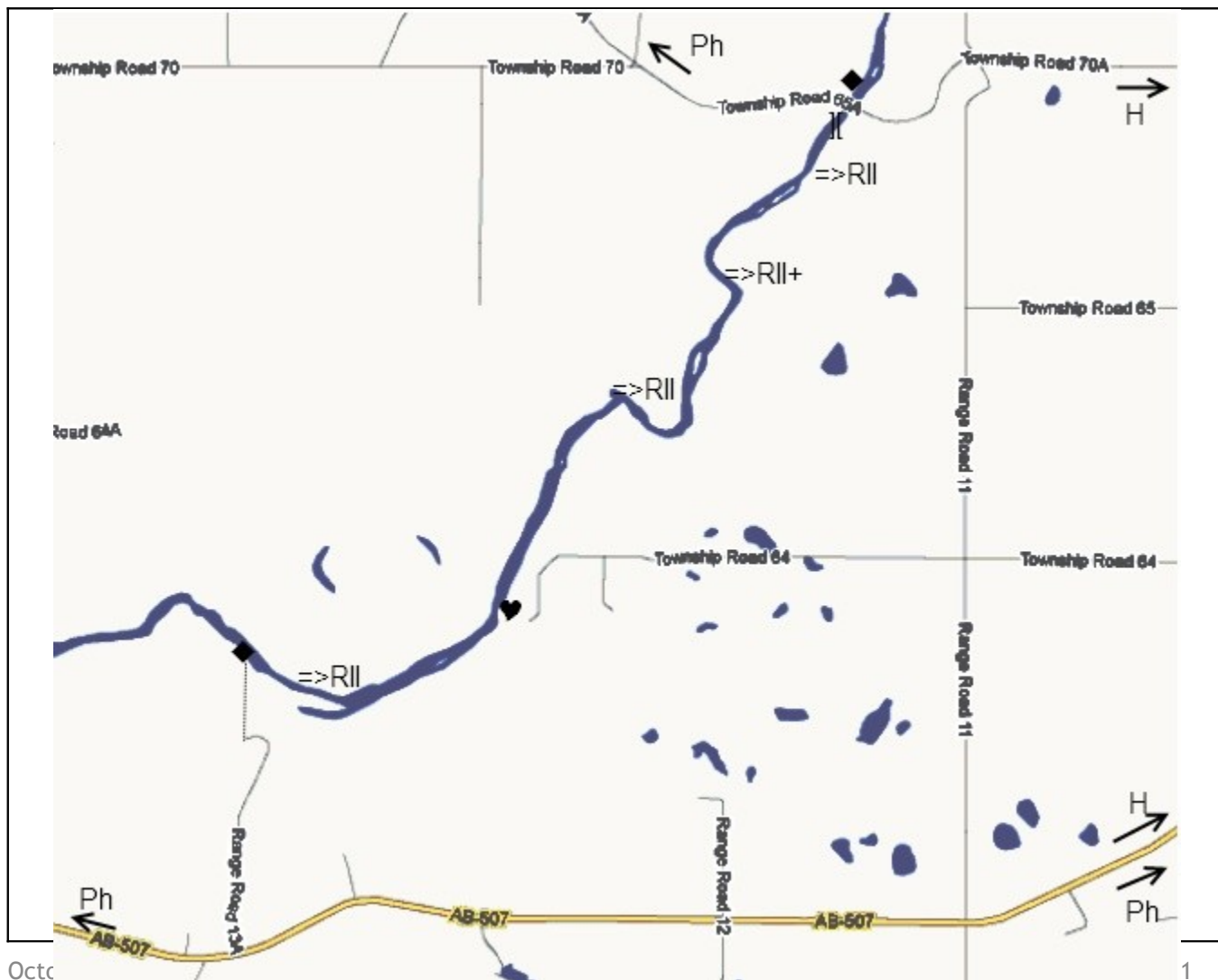
### RIVER CLASSIFICATION

- =>R RAPID (INCLUDE DIFFICULTY R<sub>I</sub> TO R<sub>VI</sub>)

- >S SIL (INCLUDE DIFFICULTY I TO V)
- ▶ DIRECTION OF WATER FLOW

### OTHER IMPORTANT DETAILS

- ▶H DIRECTION TO HOSPITAL
- ▶Ph PAY PHONE
- ♥ EVACUATION OPTIONS (INCLUDE A BRIEF DESCRIPTION OF CONDITIONS)



**PARTICIPANTS :**

NAME	MEDICAL ISSUES	E.C.P. & CONTACT NUMBERS

**VEHICLES :**

MODEL	LICENSE PLATE	LOCATION OF KEYS

**IN CASE OF EMERGENCY**

- 1) ENSURE SELF SAFE
  - 2) ENSURE NO OTHERS IN DANGER
  - 3) ALL PADDLERS STOP & MEET
    - a) EXTRACT VICTIM
  - 4) STABILISE VICTIM (USE SOAP NOTES)
    - a) LEVEL OF CONSCIOUSNESS
    - b) BREATHING
    - c) CIRCULATION
    - d) C-SPINE
    - e) DISABILITY (NEUROLOGICAL)
    - f) EXTREMITY TRAUMA & EXPOSURE
  - 5) FIRST AID KITS (TREAT VICTIM AS NEEDED)
  - 6) EMERGENCY CONTACT - **911** OR OTHER: NAME NUMBER ADDRESS
    - a) HOSPITAL: Pincher Creek Hospital 403 627 1234 1222 Bev McLachin Drive
    - b) PADDLE ORG: PinchOCrow Creekers 403 628 2336 2322 Twp Rd 7-3A
    - c) FORESTRY (based in Crowsnest Pass) 403 562 3210 18<sup>th</sup> Ave and 119<sup>th</sup> St. Blairmore
  - 7) LOCATION OF CELL PHONES : NUMBER OWNER LOCATION
    - a)
    - b)
  - 8) LOCATION OF PAYPHONES: Beaver Mines General Store OR Cowley OR Pincher Creek Shell
  - 9) EVACUATION - PREPARATION OF :
    - a) 1- PADDLER IN NEED OF CARE ;
    - b) 2- REQUIRED GEAR
  - 10) GROUP MAINTENANCE
-